

Dear parents and carers,

It is so lovely to have all the children back! Onwards and upwards!

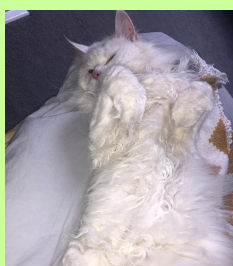
The staff have planned interesting activities to ease the children back into learning. We start back with a bang with Science Week. There are some fun experiments going on in school. There will be prizes for the most engaged, enthusiastic and inquisitive pupils.



## New Student Teacher

My name is Miss Craven. I am so excited to be joining you in your class. I am training to be a teacher at Edge Hill University. One day I will have my own class. I have lots of pets, they are called:

Theodore, Mia, Elsa, Daisy, Sunflower, Sasha







## Pinfold Primary School Newsletter March 2021

'Learning is our passion'

'Small but mighty!'



**Covid updates :** Please see the flier to the right.

There is help out there for items such as fuel bills etc. Please see the link below:

<https://www.lancashire.gov.uk/health-and-social-care/your-health-and-wellbeing/covid-winter-grant-scheme/>

**It is Comic Relief on Friday 19th March 2021**



Children will be engaging in fun activities.

They are invited to come into school dressed as Super Heroes!

We are expecting to see lots of children dressed up as doctors and nurses, police and ambulance people.

Children are allowed to wear red noses. We will not have any in school.



**NHS**  
Test and Trace

### Parents with children at nurseries, schools and colleges

A guide to regular rapid Covid-19 testing



#### How does it work?

It's a simple swab test you can do at home, school, work or test site, using a Lateral Flow Device (LFD). It takes around 30 minutes to find out if you have the virus.

The test detects viral proteins that are present when someone has Covid-19. Research from Public Health England and Oxford University shows that they pick up the vast majority of people in the most infectious stage of the disease. With up to 1 in 3 people who have the virus showing no symptoms – they could be spreading it without knowing.

Testing should take place twice a week, every three – five days, ideally in the morning. Why not add this to your morning routine?

If you test negative, you can continue to go to work. You should still strictly follow all other government guidelines and avoid all unnecessary contact. If you, your household or bubble test positive, you should all self-isolate immediately. And then the person who has tested positive should also take a confirmatory PCR test and follow latest government guidance.

For more information visit [gov.uk/guidance/understanding-lateral-flow-antigen-testing-for-people-without-symptoms](https://www.gov.uk/guidance/understanding-lateral-flow-antigen-testing-for-people-without-symptoms)

YouTube Introduction to Rapid Lateral Flow testing

### Regular rapid testing is now available for parents, their households and bubbles.

Regular rapid testing is a fast and easy way to find out if you have coronavirus and help protect your loved ones and community. It's free and takes around 30 minutes.

#### Why introduce regular rapid testing?

Up to 1 in 3 people who have Covid-19 have no symptoms and could be spreading it without knowing.

Regular rapid testing is now available for parents of nursery, school children and college students. As well as adults in their households, childcare and support bubbles.

Regular testing for people without symptoms is already taking place across the country. Thousands of people who didn't know they had the virus have been able to take action to stop the spread of the disease.

As lockdown restrictions ease, getting into the regular habit of twice weekly testing will play an important role in getting back to normal; alongside the vaccine, following the hands, face, space guidance, and social distancing measures.



#### Reporting your test

You should report your results online straight away, even if your result is negative or void. It's easy to do at: [gov.uk/report-covid19-result](https://www.gov.uk/report-covid19-result)

Results can also be reported via telephone by calling 119 (free from mobiles and landlines). Lines are open every day, 7am to 11pm.

If you have tested positive, you can also check to see if you are eligible for the £500 Test and Trace Support Payment.



### Regular testing for school staff and students

Regular rapid testing is already available to all staff at nursery, primary and secondary schools and colleges.

Secondary school and college students aged 11 and above will continue to access regular rapid tests directly through their school or college. And we continue to encourage them to get tested.

On return they will initially be supervised while testing at school and then continue to test themselves at home with test kits they will get from school or college.

Nursery and primary school children are not being asked to be tested as evidence continues to show that children and young people are at low risk from Covid-19 and are very unlikely to get seriously ill.

#### What is the benefit to you?

By taking part in regular rapid testing, you'll be protecting yourself and your loved ones. And helping us all get back to a more normal way of life.



#### Where can I get tested?

If you are a parent or adult of a household, childcare or support bubble you can either:

1. Get an assisted test at work if it is available.
2. Attend a test site to get tested (where you will be able to see how to take the test) or pick up tests to do at home.
3. Order a test online to do at home.

To find out how to get a free rapid Covid-19 test visit [gov.uk/coronavirus/school-household-testing](https://www.gov.uk/coronavirus/school-household-testing)

Regular rapid testing is for those without symptoms of Coronavirus. If you have symptoms, you should continue to book through [nhs.uk/coronavirus](https://www.nhs.uk/coronavirus)

### Easter is nearly here!

We would like Willow class to create an Easter Bonnet. It would be super if it could be from bits and bobs from your house as we have been creating lots of models from junk- and it won't cost you anything!

We would like Oak class to make an 'Eggorama'. (diorama) This means using a blown egg, or boiled egg as a character and creating a background in a small box for him or her or them!

Please can your children bring them into school for quarantine by Friday 19th March. We will have our Easter bonnet parade and assembly on Thursday 25th March and prizes will be awarded!

